



**forklift**safety  
the key part of your system

# Warehouse Management System (WMS)

WMS is an IT management system allowing users to track specific activities to control the warehouse and stocks in real time. Thus, managing the flow of raw materials and goods - physically and scripted, their entry in the warehouse until their final exit, will become an effective activity, executed in a timely manner.



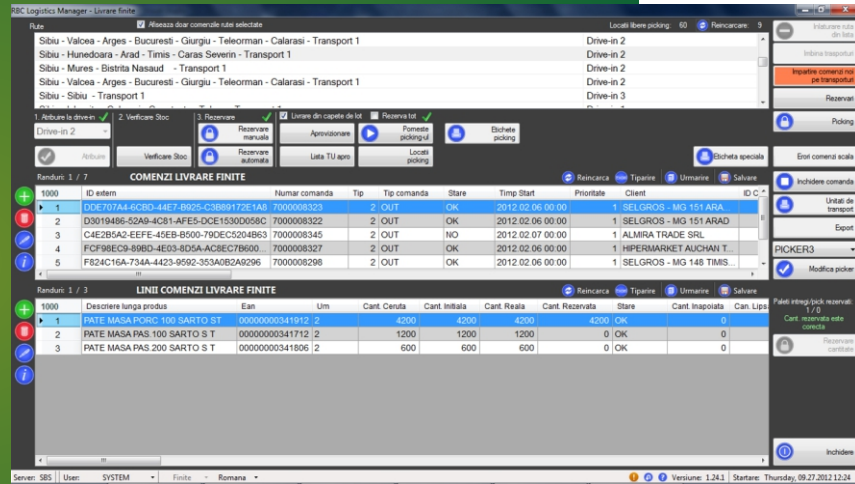
## WMS – one solution, multiple benefits

- Reduce administration costs with the warehouse
- Maximize storage capacity
- Increasing the efficiency of warehouse
- Supplying production lines without delay
- The management and production planning
- Total Traceability
- Defining the optimal storage locations
- Reduction and route optimization
- Proper inventory rotation
- Inventory Accuracy
- Timely delivery of final orders
- Low cost delivery
- Reducing inventory
- Optimizing human resources
- Multiple reports and complex performance indicators



# APPLICATIONS optimized by implementing WMS are:

- Labelling
- Reception
- Planning ramps
- Management of shelves
- Delivery
- Picking
- Routes
- Reorganization
- Logistics
- crossdock
- Reports and statistics
- Operators
- History data
- Performance Indicators [KPIs]



## SOFTWARE SOLUTION FOR DELIVERY

- Management of orders to suppliers / customers.
- Management of contracts with suppliers / customers.
- Managing logistics platform for transfers between sites
- Managing traceability.
- Managing external deposits logistical benefits.
- Automatic optimization proposal sites out of the manufacturing process and potential sites available at the store.
- Optimizing delivery routes.
- Management acquisition and sale prices.
- Printing bills and statements of compliance.
- Interfacing with other solutions (eg accounting).
- Functions to optimize the activity and operator guidance

